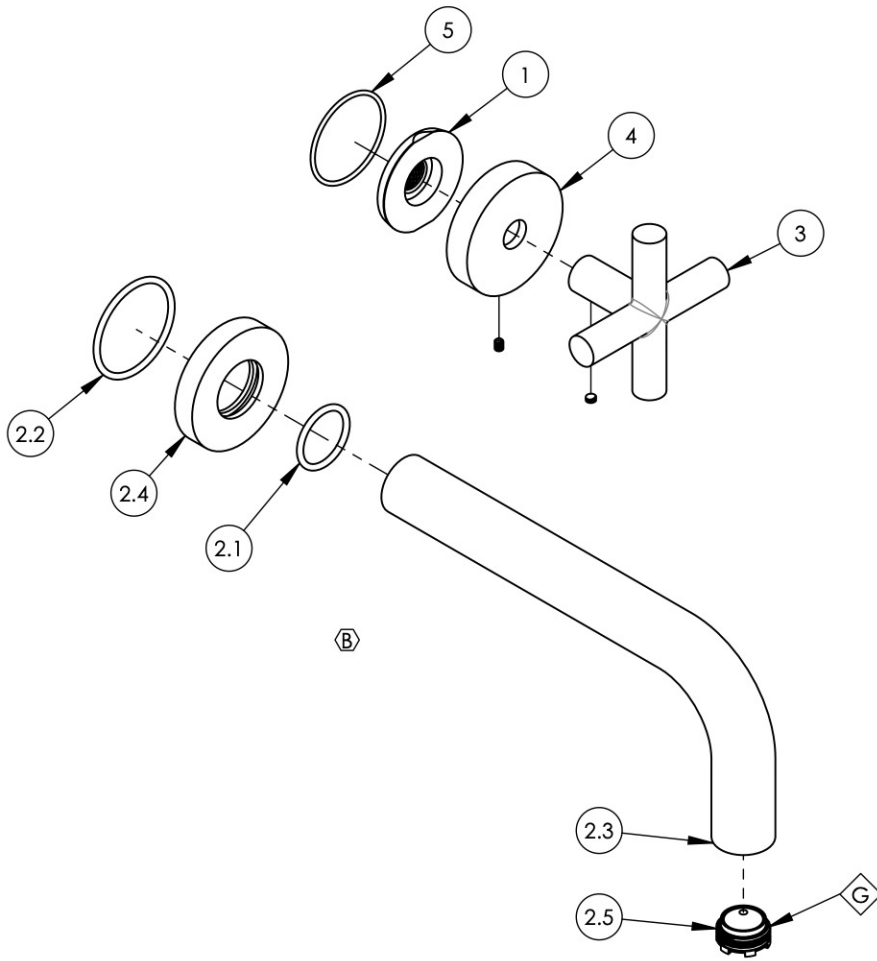


- NOTE(S):
- PART NUMBER, "/00" DENOTES PART SHALL HAVE FINISH.
 - APPLY NSF COMPLIANT GREASE TO ANY O-RING, SEALING JOINTS, AND/OR PIVOTAL POINTS.
 - APPLY NSF COMPLIANT LOCTITE TO THREADED AREA.
 - APPLY NSF COMPLIANT REMOVABLE (BLUE) LOCTITE TO THREADED AREA.
 - SILVER SOLDER JOINTS SHALL BE FULLY WETTED VIA CAPILLARY ACTION AND COMPLETELY NON-POROUS.



| ITEM NO. | PART NUMBER | DESCRIPTION | QTY. |
|----------|-------------|--|------|
| 1 | 11003 | SLEEVE MOUNT, WALL MT WIDESPREAD | 1 |
| 2 | 3-414/00 | ASSY. 7 1/2" C-C WALL LAV. SPOUT, BASIC | 1 |
| 2.1 | 90119 | O-RING, 15/16"ID X 1-1/8"OD X 3/32"THK, AS-568-119 | 1 |
| 2.2 | 90129 | O-RING, 1-9/16"ID X 3/32THK, AS-568-129 | 1 |
| 2.3 | P19018/00 | 7-1/2" WALL LAV SPOUT, BASIC SERIES | 1 |
| 2.4 | P19017/00 | ESCUTCHEON, FOR SPOUT | 1 |
| 2.5 | 11429 | AERATOR CACHE JR, 1.2GPM, M21.5X1.0, 42.2260.450 | 1 |
| 3 | 3-580/00 | HANDLE CROSS W/ SET SCREW, TRANSITION | 1 |
| 4 | 3-590/00 | ESCUTCHEON W/ SET SCREW, TRANSITION | 1 |
| 5 | 90029 | O-RING, 1-5/8"ID X 1-3/4"OD X 1/16"THK, AS-568-029 | 1 |



| ALL | B | REVERT SPOUT ASSEMBLY BACK TO ORIGINAL | 11/1/2021 | AMM |
|-----------|------|--|-----------|----------|
| ZONE | REV. | DESCRIPTION | DATE | APPROVED |
| REVISIONS | | | | |

1261 LOGAN AVENUE
COSTA MESA, CALIFORNIA 92626
PHONE: 714.361.4800
FAX: 714.617.3120

PHYLIRICH[®]
Defining Luxury Since 1959

PROPRIETARY AND CONFIDENTIAL
THE INFORMATION CONTAINED IN THIS DRAWING IS THE SOLE PROPERTY OF PHYLIRICH. ANY REPRODUCTION IN PART OR AS A WHOLE WITHOUT THE WRITTEN PERMISSION OF PHYLIRICH IS PROHIBITED.
DO NOT SCALE DRAWING

**WALL LAV SET, SINGLE HANDLE, SPOUT
7-1/2" W/ CROSS, TRANSITION**

| | | |
|------------------|--------------------------|--------------|
| SIZE A | ASM/PRT NO. 120-15/00 | REV B |
| SCALE: 1:3 | WEIGHT: lbs. | SHEET 1 OF 2 |